



EWH25-60

Parts Manual

(Includes M2, MC2, MR2, and MP2)

American Dryer Corporation
88 Currant Road
Fall River MA 02720-4781 USA
Telephone: +1 (508) 678-9000 / Fax: +1 (508) 678-9447
e-mail: techsupport@amdry.com

www.adclaundry.com

Retain This Manual In A Safe Place For Future Reference

American Dryer Corporation products embody advanced concepts in engineering, design, and safety. If this product is properly maintained, it will provide many years of safe, efficient, and trouble free operation.

ONLY qualified technicians should service this equipment.

OBSERVE ALL SAFETY PRECAUTIONS displayed on the equipment or specified in the installation manual included with the dryer.

The following “**FOR YOUR SAFETY**” caution must be posted near the dryer in a prominent location.

FOR YOUR SAFETY

Do not store or use gasoline or other flammable vapors and liquids in the vicinity of this or any other appliance.

POUR VOTRE SÉCURITÉ

Ne pas entreposer ni utiliser d'essence ni d'autres vapeurs ou liquides inflammables à proximité de cet appareil ou de tout autre appareil.

We have tried to make this manual as complete as possible and hope you will find it useful. ADC reserves the right to make changes from time to time, without notice or obligation, in prices, specifications, colors, and material, and to change or discontinue models.

Important

For your convenience, log the following information:

DATE OF PURCHASE _____ **MODEL NO.** _____

RESELLER'S NAME _____

Serial Number(s) _____

Replacement parts can be obtained from your reseller or the ADC factory. When ordering replacement parts from the factory, you can FAX your order to ADC at (508) 678-9447 or telephone your order directly to the ADC Parts Department at (508) 678-9000. Please specify the dryer model number and serial number in addition to the description and part number, so that your order is processed accurately and promptly.

The illustrations on the following pages may not depict your particular dryer exactly. The illustrations are a composite of the various dryer models. Be sure to check the descriptions of the parts thoroughly before ordering.

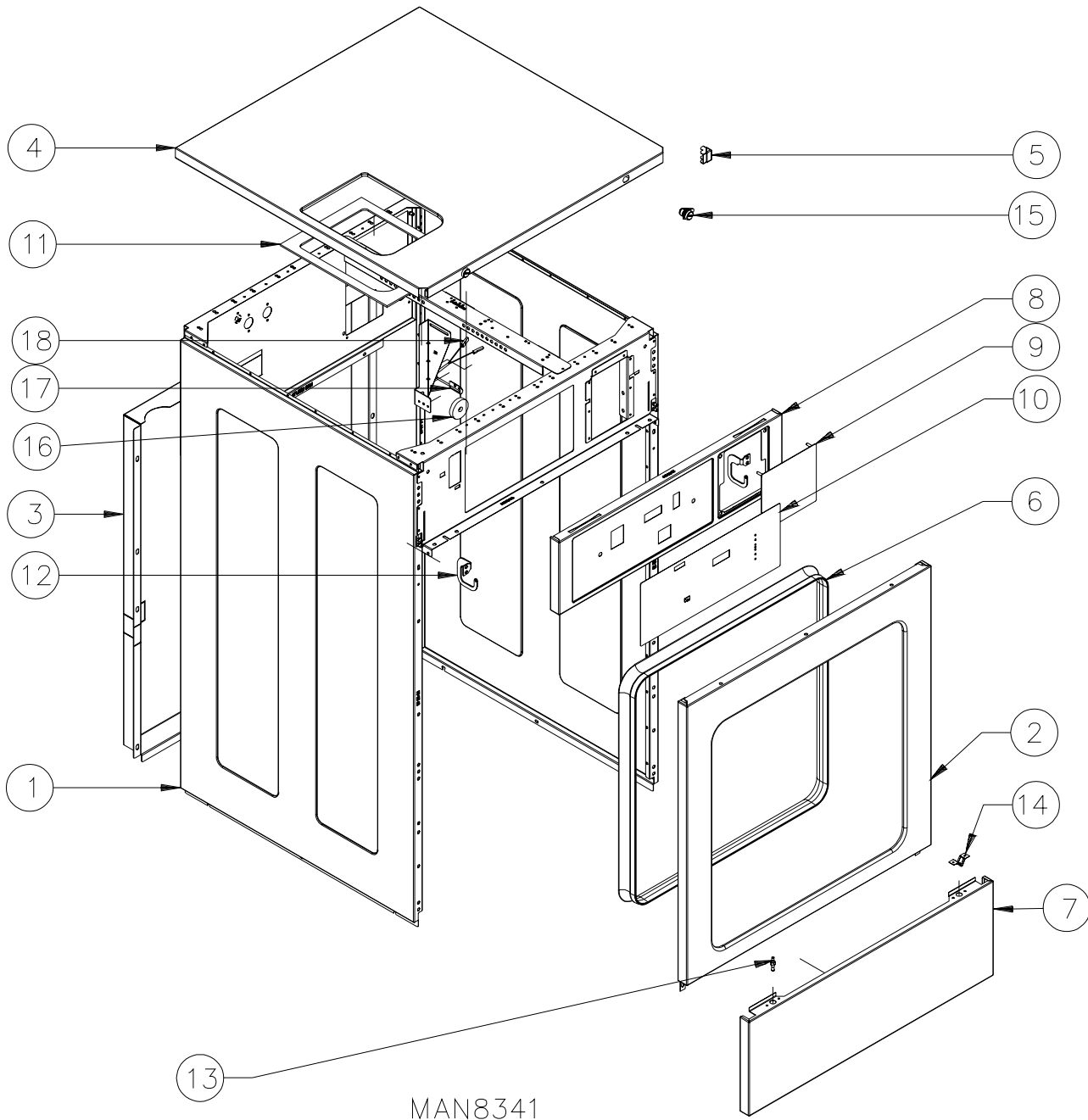
“IMPORTANT NOTE TO PURCHASER”

Information must be obtained from your local gas supplier on the instructions to be followed if the user smells gas. These instructions must be posted in a prominent location near the dryer.

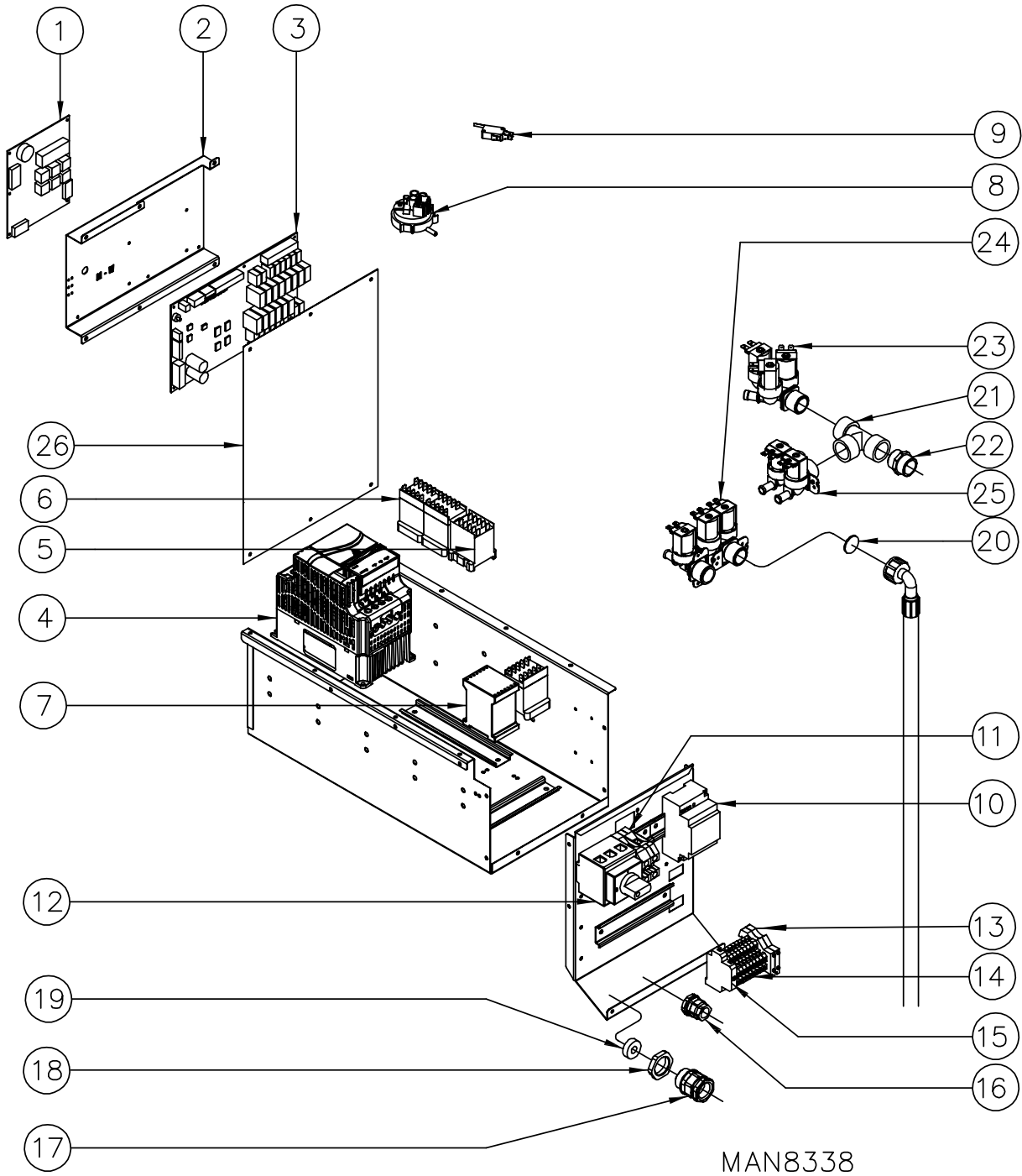
Table of Contents

Outer Panels and Guards	4
Electronics and Valves	6
Coin Acceptor and Vault	8
Front Panel and Door	10
Door Lock Assembly	12
Drum and Drive System	14
Soap Box and Drains	16
Drum Assembly	18
Frame and Suspension System	20
Drum Bearing Kits	21

Outer Panels and Guards

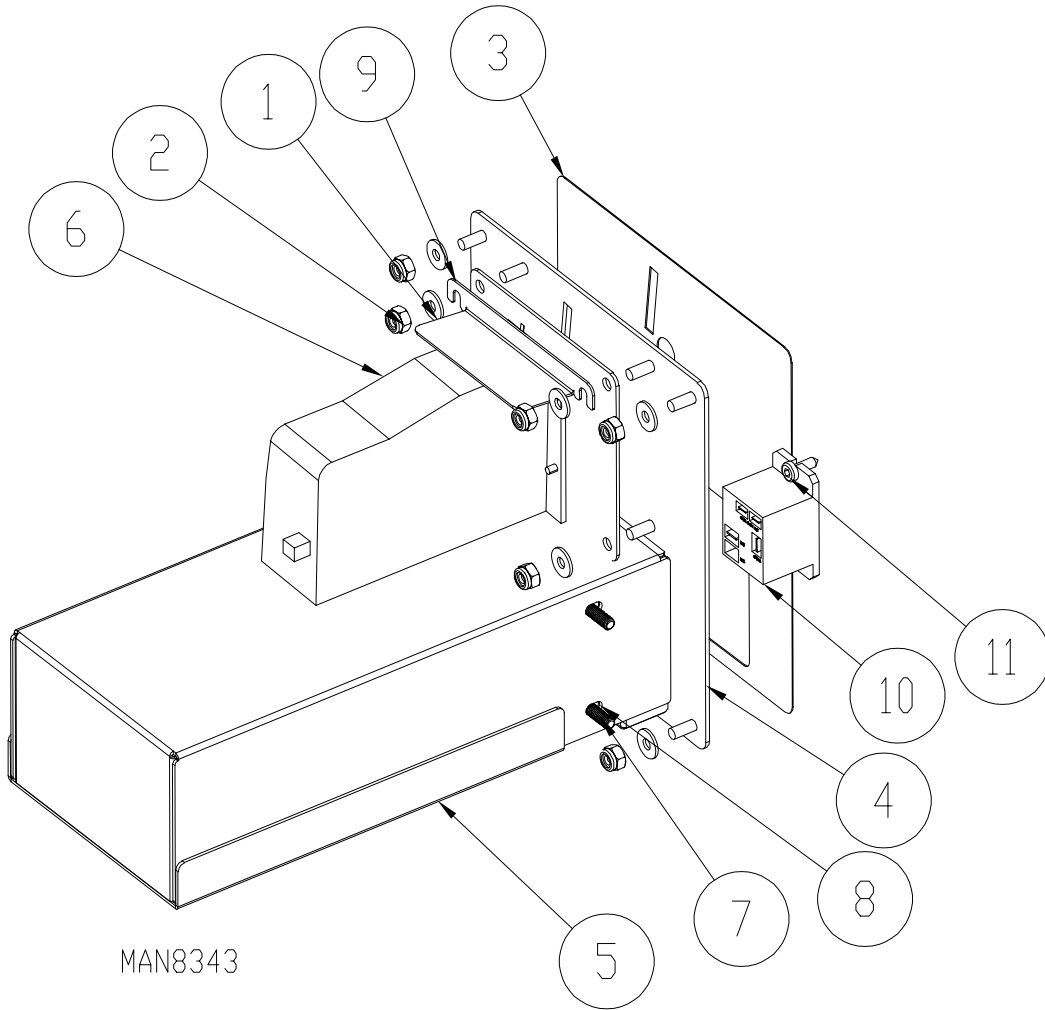


<u>Illus. No.</u>	<u>Part No.</u>	<u>Qty.</u>	<u>Description</u>
1	500989	2	Side Panel EWH-25
	500729	2	Side Panel EWH-30
	501517	2	Side Panel EWH-40
	501518	2	Side Panel EWH-60
2	501519	1	Front Panel EWH-25
	501520	1	Front Panel EWH-30
	501521	1	Front Panel EWH-40
	501522	1	Front Panel EWH-60
3	501523	1	Rear Panel EWH-25
	500507	1	Rear Panel EWH-30
	500508	1	Rear Panel EWH-40
	500512	1	Rear Panel EWH-60
4	501524	1	Worktop EWH-25
	500982	1	Worktop EWH-30
	501525	1	Worktop EWH-40
	501526	1	Worktop EWH-60
5	501017	2	Corner
6	500240	1	Front Panel Gasket
7	501527	1	Skirting EWH-25
	500981	1	Skirting EWH-30
	501528	1	Skirting EWH-40
	501529	1	Skirting EWH-60
8	501530	1	Control Panel EWH-25 M, MR, and MC
	501531	1	Control Panel EWH-25 MP
	501001	1	Control Panel EWH-30 M, MR, and MC
	501014	1	Control Panel EWH-30 MP
	501002	1	Control Panel EWH-40 M, MR, and MC
	501015	1	Control Panel EWH-40 MP
	501003	1	Control Panel EWH-60 M, MR, and MC
	501532	1	Control Panel EWH-60 MP
9	828323	1	Coin Acceptor Faceplate Assembly
	500746	1	Compl., Card Plate MR
	828647	1	Debit Card Adapter Harness ... Not Illustrated
	814886	1	Central Payment Cover (MP models)
10	500949	1	Adhesive Keypad M2
	500950	1	Adhesive Keypad MC2
	500952	1	Adhesive Keypad MR2
	500951	1	Adhesive Keypad MP
11	500744	1	Detergent Tray Support
12	501004	1	Control Panel Hinge "Left"
	501005	1	Control Panel Hinge "Right"
13	500743	—	Closure Bolt
14	501006	2	Spring Lock
15	501009	2	Self-Service Lock
	500987	2	Key for Lock
16	500243	1	Imbalance Magnet
17	501533	1	Imbalance Sensor Bracket
18	501534	1	Imbalance Sensor



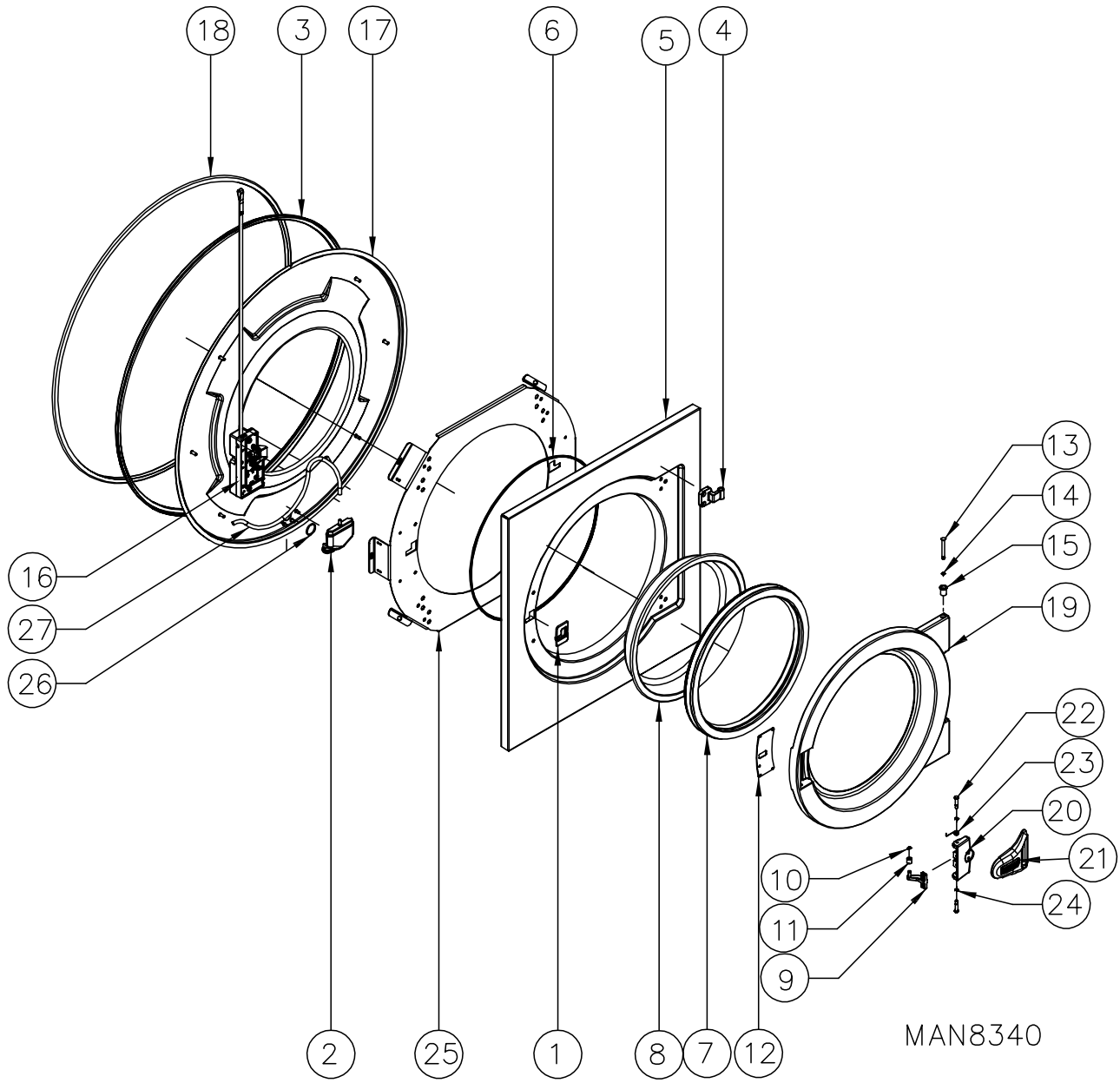
<u>Illus. No.</u>	<u>Part No.</u>	<u>Qty.</u>	<u>Description</u>
1	500276	1	Display Board M, MR, and MP
	500277	1	Display Board MP
2	501052	1	Computer Support Bracket M, MR, and MC
	501503	1	Computer Support Bracket MP
3	884619	1	Computer Board M, MR, and MC
	500275	1	Computer Board MP
4	500561	1	Variator EWH-25
	500562	1	Variator EWH-30
	500563	1	Variator EWH-40
	500917	1	Variator EWH-60
5	500143	1	230V, 50/60 Hz Relay NC
6	500112	2	230V, 50/60 Hz Relay NO
7	500114	—	Power Contactor
	500113	—	Hot Water Flush Contactor
	500636	—	Heating Contactor
8	500120	1	Simple Pressure Switch
9	501054	1	Program Microswitch
10	501016	1	Power Supply 240V/12V
11	500259	1	Earth Terminal
	500258	1	Blue Terminal
12	500255	1	Circuit Breaker 32-Amp
	500256	1	Circuit Breaker 63-Amp
13	500263	2	Fuse Holder Terminal
	500881	2	Fuse 4A
14	500262	6	Dispenser Terminal Strip
15	500257	2	End Stop
16	500270	1	Wire Grommet
17	500271	1	Wire Grommet
18	500273	1	Plastic Nut
19	500272	1	Rubber Seal
20	500142	1	Joint Filter N-3
	500882	1	Racor Filter Holder 3/4
21	500265	—	3/4 Tee
22	500264	1	3/4" Connection
23	500103	1	3-Way Solenoid Valve
24	500102	—	Simple Solenoid Valve EWH-25, 30, and 40
	500101	—	Simple Solenoid Valve EWH-60
	500057	—	Simple Solenoid Valve Coil EWH-60
	500640	—	Racor Filter Holder 3/4
25	500123	1	2 Way Solenoid Valve
26	—	1	Plastic Computer Shield ... Not Available at Time of Printing

Coin Acceptor and Vault



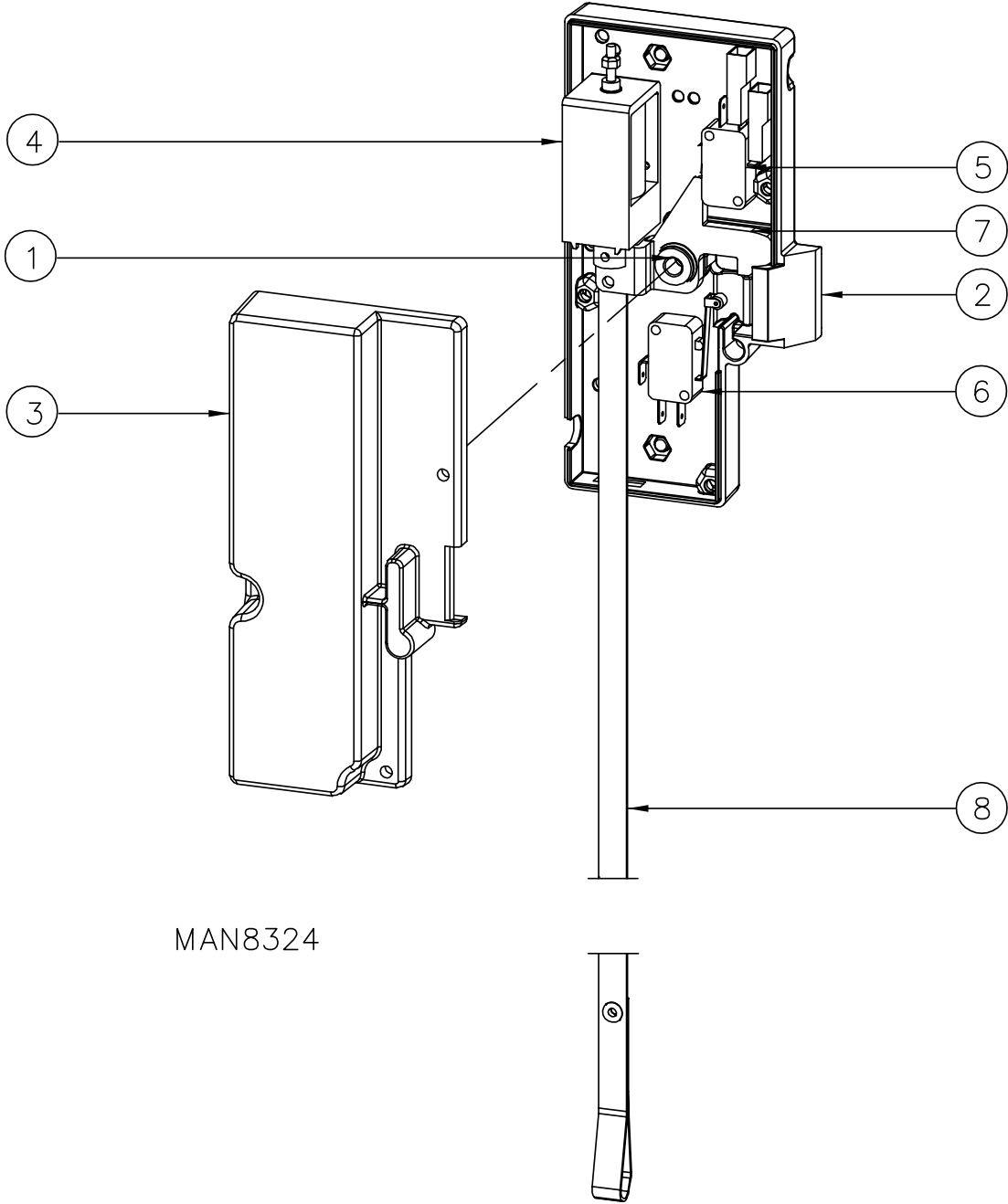
<u>Illus. No.</u>	<u>Part No.</u>	<u>Qty.</u>	<u>Description</u>
1	154362	8	.192 ID .500 OD SS Flat Washer
2	151015	8	#10-32 Nylon Insert Hex Nut SS
3	500115	1	Face Plate Sticker
4	828592	1	Coin Acceptor Face Plate Clinch Assembly SS
5	828591	1	Coin Vault Weldment
6	828595	1	Programmable Coin Acceptor Assembly USD/CAD/MXN
	828606	1	TWD Coin Acceptor
	828608	1	AUD/NZD/HKD Coin Acceptor
	828610	1	MYR Coin Acceptor
7	150548	4	M5x16 SHCS 18-8SS
8	153080	4	M5 Flat Washer
9	328820	1	EcoWash Coin Mech Bracket
10	131415	1	Relay 240Vac 20A SPST NO
11	150331	2	#8-18 x 1/2 Pan Head TORX® Screw

Front Panel and Door



<u>Illus. No.</u>	<u>Part No.</u>	<u>Qty.</u>	<u>Description</u>
1	500805	1	Lock Trim
2	500941	1	Pressure Chamber
3	500314	1	Tub Seal EWH-25
	500553	1	Tub Seal EWH-30
	500522	1	Tub Seal EWH-40
	500543	1	Tub Seal EWH-60
4	501039	2	Door Hinge
5	501509	1	Inner Front Panel EWH-25
	501510	1	Inner Front Panel EWH-30, 40, and 60
6	500970	1	Front Panel Seal
7	102433	1	Door Seal EWH-25
	500093	1	Door Seal EWH-30, 40, and 60
8	501511	1	Door Glass EWH-25
	500810	1	Door Glass EWH-30, 40, and 60
9	500144	1	Lock Hook
10	500812	1	Locking Ring
11	500169	1	Door Bushing
12	501512	1	Lid Closure EWH-25
	501041	1	Lid Closure EWH-30, 40, and 60
13	500815	2	Door Pin
14	500910	2	Door Hinge Pin C-Clip
15	500817	2	Self-Oil Bushing
16	501044	1	Complete Lock Fagor EWS/R25-60
17	501513	1	Complete Tub Front EWH-25
	501045	1	Complete Tub Front EWH-30
	501046	1	Complete Tub Front EWH-40
	501047	1	Complete Tub Front EWH-60
18	501514	1	Complete Tub Enclosure EWH-25
	500288	1	Complete Tub Enclosure EWH-30
	500595	1	Complete Tub Enclosure EWH-40
	500596	1	Complete Tub Enclosure EWH-60
19	501515	1	Complete Door EWH-25
	500196	1	Complete Door EWH-30, 40, and 60
20	500700	1	Door Handle Base EWS/R25-60
21	500828	1	Door Handle
	500829	1	EcoWash Logo
22	500830	2	Lock Pin
23	500831	—	Lock Spring
24	500910	2	Hinge C Clip
25	501516	1	Main Door Base Plate EWH-25
	501049	1	Main Door Base Plate EWH-30, 40, and 60
26	501051	1	O-Ring D25 x 3.5
27	500316	1	Black Rubber Hose

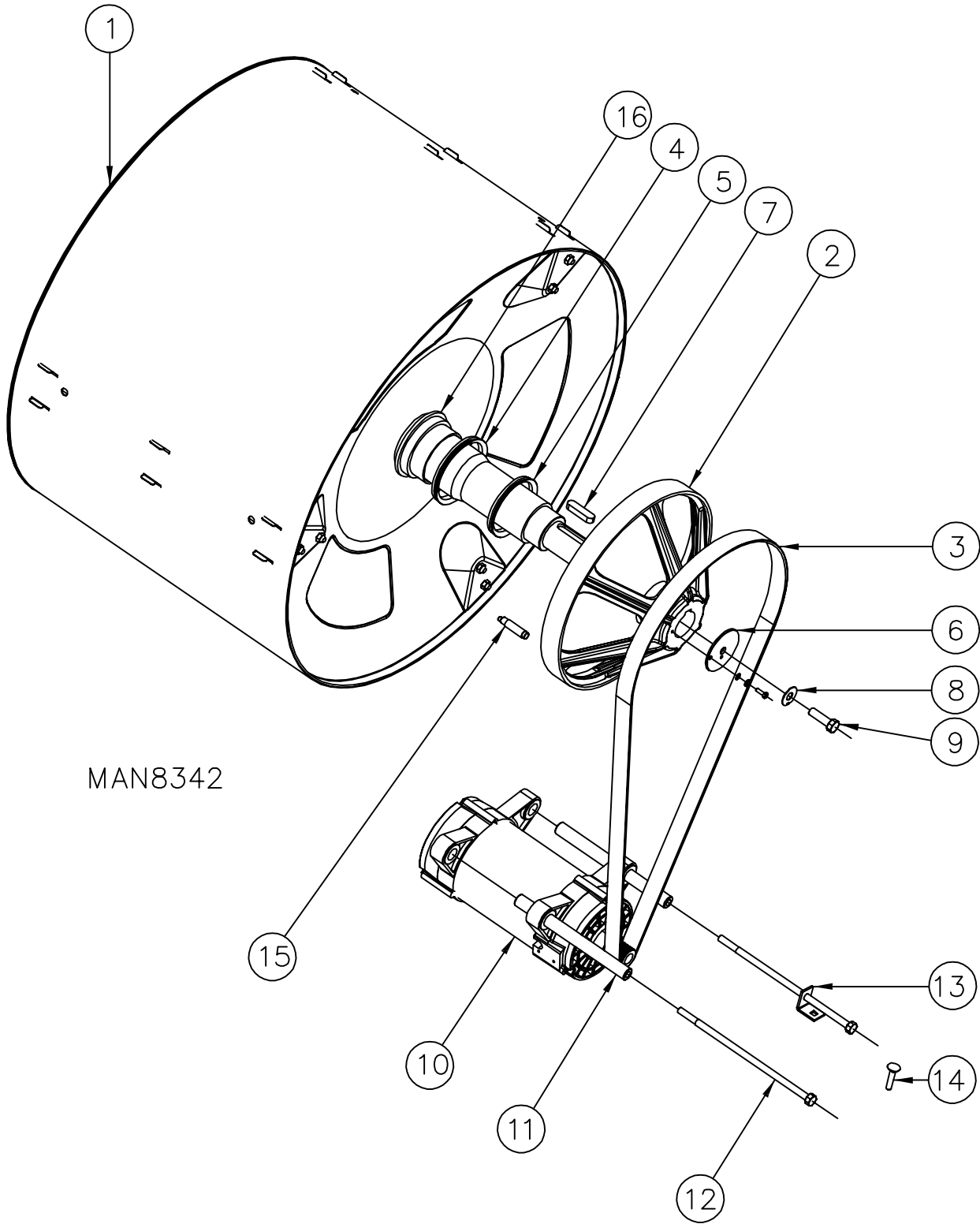
Door Lock Assembly



MAN8324

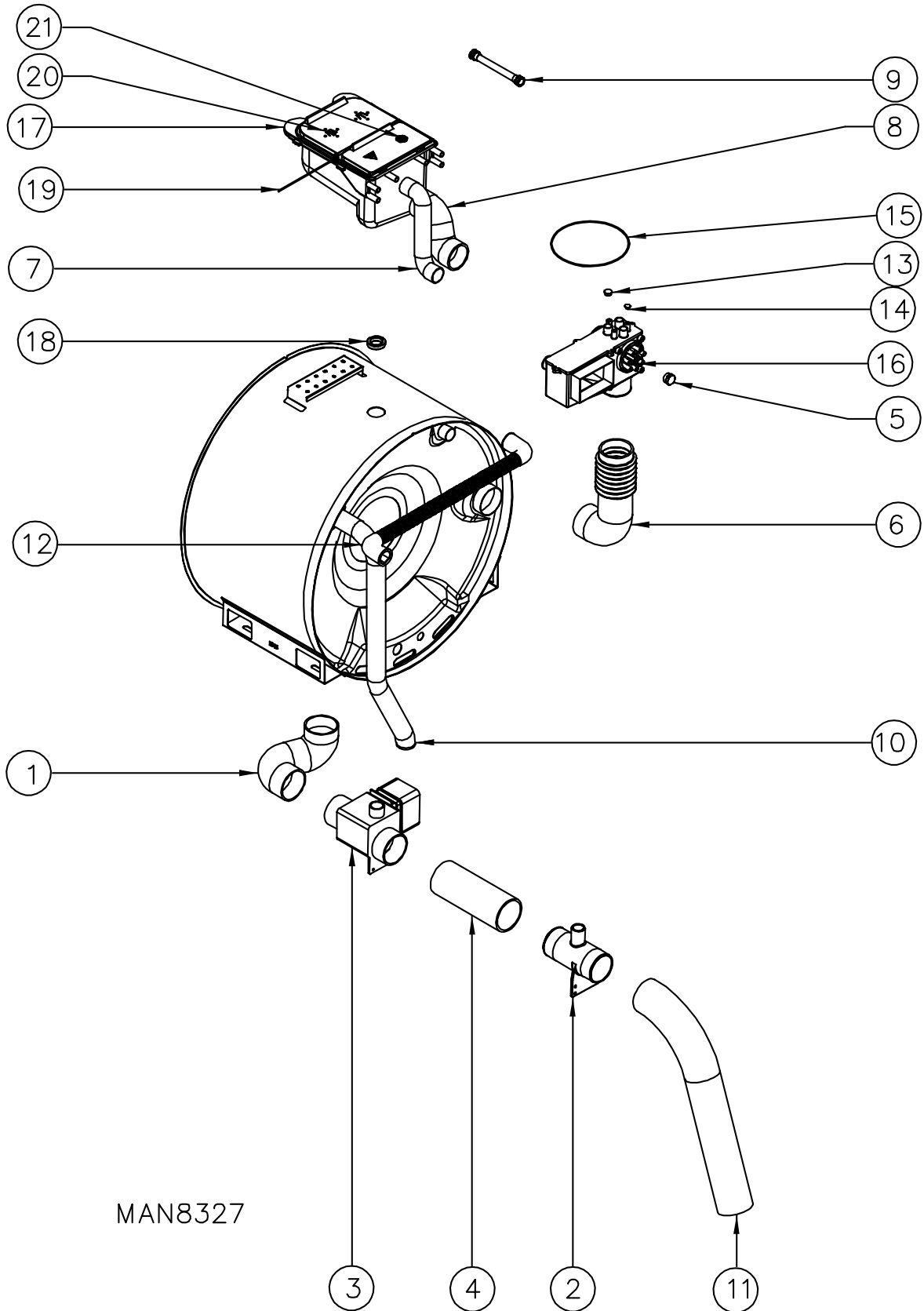
<u>Illus. No.</u>	<u>Part No.</u>	<u>Qty.</u>	<u>Description</u>
1	500948	1	Bushing
2	500943	1	Lock Base
3	500944	1	Door Lock Cover
4	500945	1	Lock Actuator
5	500122	1	Door Lock Switch
6	500946	1	Door Switch
7	500947	1	Door Lock Arm
8	500325	1	Door Pull
-	500932	1	PTC of the Door Lock 2015 ... Not Illustrated

Drum and Drive System



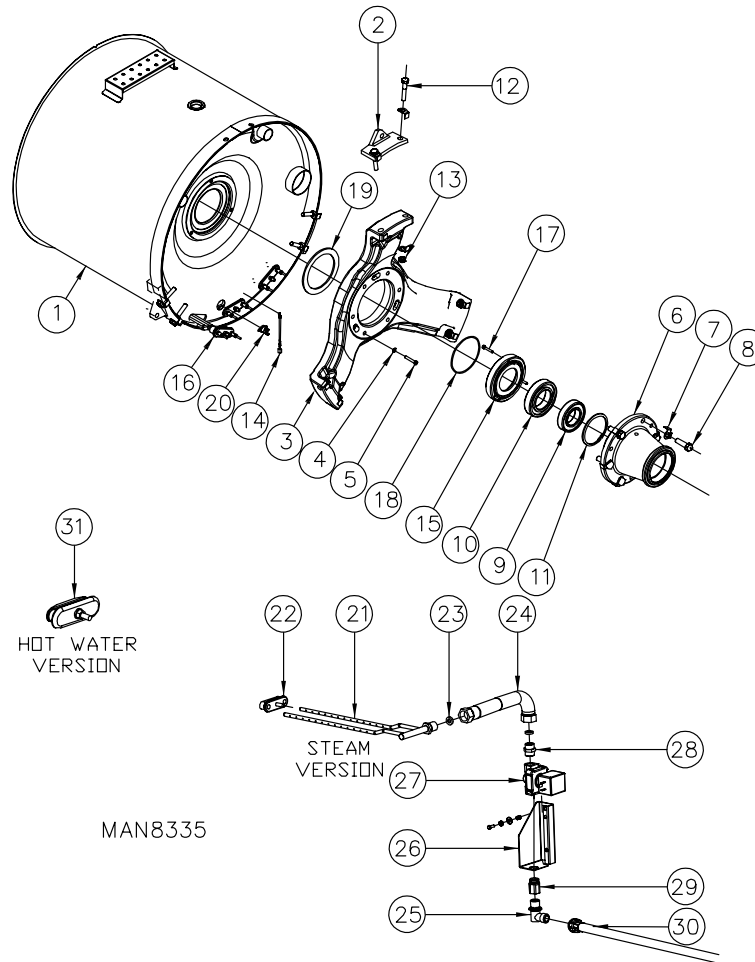
<u>Illus. No.</u>	<u>Part No.</u>	<u>Qty.</u>	<u>Description</u>
1	501064	1	Complete Drum EWH-25
	501065	1	Complete Drum EWH-30
	501066	1	Complete Drum EWH-40
	500600	1	Complete Drum EWH-60
2	501067	1	Drum Pulley EWH-25
	500335	1	Drum Pulley EWH-30 and 40
	500601	1	Drum Pulley EWH-60
3	500094	1	Belt Poly-V EWH-25
	500095	1	Belt Poly-V EWH-30
	500096	1	Belt Poly-V EWH-40
	500097	1	Belt Poly-V EWH-60
4	500337	1	V-Ring Retainer VA-80 Viton EWH-25
	500338	1	V-Ring Retainer VA-85 Viton EWH-30
	500581	1	V-Ring Retainer VA-95 Viton EWH-40
	500606	1	V-Ring Retainer VA-100 Viton EWH-60
5	500339	1	V-Ring Retainer 65A NBR EWH-25
	500340	1	V-Ring Retainer VA-70 NBR EWH-30
	500337	1	V-Ring Retainer VA-80 Viton EWH-40
	500607	1	V-Ring Retainer VA-20 Viton EWH-60
6	501068	1	Pulley Washer EWH-25
	500860	1	Pulley Washer EWH-30, 40, and 60
7	501069	1	Cotter Pin 10x8x40 EWH-25
	500859	1	Cotter Pin 20x12x63 EWH-30, 40, and 60
8	500588	1	Locking Ring
9	501070	1	Pulley Bolt
10	500098	1	Motor 230V AC 3 EWH-25
	500099	1	Motor 230V AC 3 EWH-30
	500100	1	Motor 230V AC 3 EWH-40
	500124	1	Motor 230V AC 3 EWH-60
11	501071	1	Motor Support Tube EWH-25
	501072	1	Motor Support Tube EWH-30
	500610	1	Motor Support Tube EWH-40
	500611	1	Motor Support Tube EWH-60
12	501073	1	Motor Support Bolt EWH-25
	501074	1	Motor Support Bolt EWH-30
	501075	1	Motor Support Bolt EWH-40 and 60
13	501076	1	Motor Tensor
14	501077	1	M8 x 35 Bolt
15	500355	1	Magnetic Sensor 230V AC
	500865	1	Magnetic Sensor Support
16	501078	1	Axis Bushing EWH-25
	501079	1	Axis Bushing EWH-30
	501080	1	Axis Bushing EWH-40
	501081	1	Axis Bushing EWH-60

Soap Box and Drains



<u>Illus. No.</u>	<u>Part No.</u>	<u>Qty.</u>	<u>Description</u>
1	500164	1	Inner Drainage Pipe EWH-25, 30, and 40
	500373	1	Inner Drainage Pipe EWH-60
2	500672	1	Drain Output 3"
3	884513	1	Drain Valve
	500690	1	Cap for Drain Valve Overflow
4	500370	1	Valve-Output Pipe EWH-25 and 30
	500624	1	Valve-Output Pipe EWH-40
	500625	1	Valve-Output Pipe EWH-60
5	500153	1	Cover 1/2"
6	500372	1	Collector Box-Tub Pipe EWH-25
	500373	1	Collector Box-Tub Pipe EWH-30
	500180	1	Collector Box-Tub Pipe EWH-40 and 60
7	500360	1	Tray Overflow Pipe EWH-25 and 30
	500619	1	Tray Overflow Pipe EWH-40
	500618	1	Tray Overflow Pipe EWH-60
8	500358	1	Tray Pipe EWH-25 and 30
	500615	1	Tray Pipe EWH-40
	500614	1	Tray Pipe EWH-60
9	500035	1	USA Water Inlet Pipe
	500133	1	Adapter 3/4" BSP-NH
10	500368	1	Tub Overflow Pipe EWH-25
	500458	1	Tub Overflow Pipe EWH-30
	500621	1	Tub Overflow Pipe EWH-40
	500622	1	Tub Overflow Pipe EWH-60
11	501028	1	Drain Pipe
12	500457	1	Steam Output Hose
13	500365	3	Collector Box Plug 8
14	500366	1	Collector Box Plug 16
15	500367	1	Collector Box Cover Seal
16	501029	1	Complete Collector Box
17	500138	1	Detergent Tray
	500359	2	Detergent Tray Cap
18	501030	1	Steam Output EWH-25
	500929	1	Top Drum Plug EWH-30, 40, and 60
19	500875	2	Tray Cover Rod
20	500876	1	Cover 1
21	500877	1	Cover 2

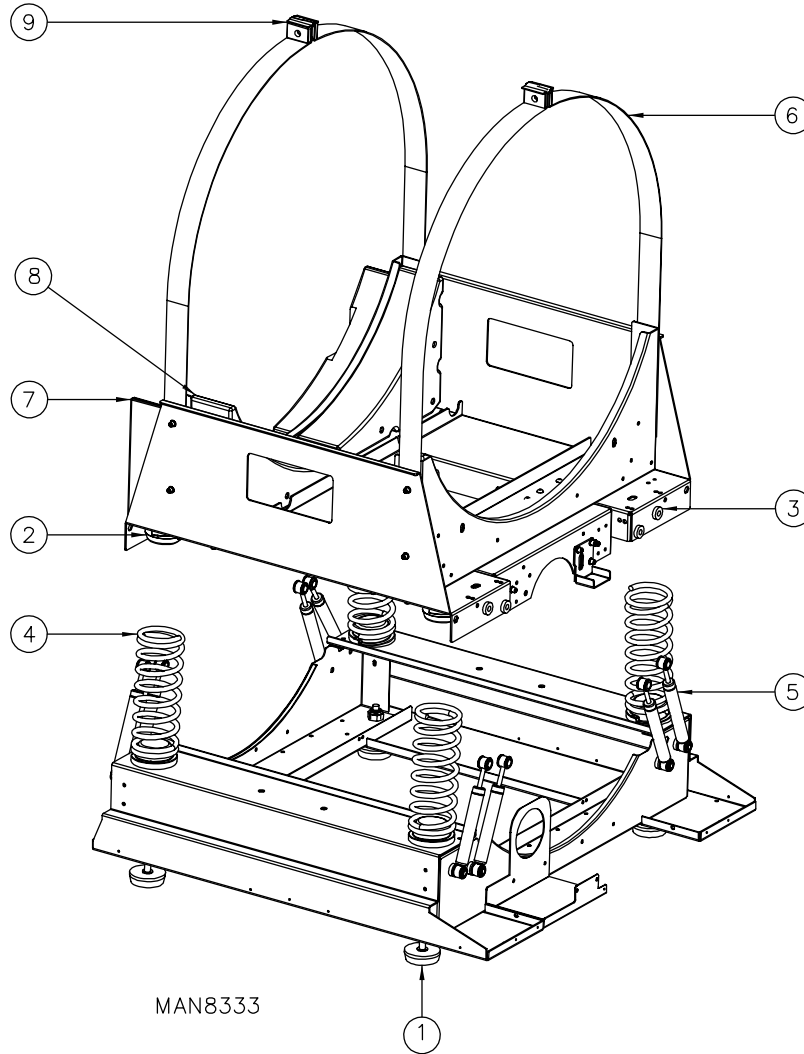
Drum Assembly



Illus. No.	Part No.	Qty.	Description
1	501504	1	Complete Tub EWH-25
	501505	1	Complete Tub EWH-30
	501506	1	Complete Tub EWH-40
	501507	1	Complete Tub EWH-60
2	500375	3	EWH-25 Screw Support
	500444	3	EWH-30 Screw Support
	500491	3	EWH-40 Screw Support
	500530	3	EWH-60 Screw Support
3	500376	1	EWH-25 Tub Support
	500445	1	EWH-30 Tub Support
	500511	1	EWH-40 Tub Support
	500531	1	EWH-60 Tub Support
4	500377	-	6mm Flat Washer
5	500378	-	M6 x 35 Bolt
6	500379	1	Bearing Support EWH-25
	500754	1	Bearing Support EWH-30
	500755	1	Bearing Support EWH-40
	500756	1	Bearing Support EWH-60
7	500380	-	13 Din Safety Washer EWH-25 and 30
	500646	-	15 Din Safety Washer EWH-40
	500533	-	16 Din Safety Washer EWH-60
8	500381	-	M12 x 40mm Bolt EWH-25
	500386	-	M12 x 55mm Bolt EWH-30
	500521	-	M14 x 70mm Bolt EWH-40 and 60

<u>Illus. No.</u>	<u>Part No.</u>	<u>Qty.</u>	<u>Description</u>
9	500758	1	Bearing 45 x 85 x 19 EWH-25
	500448	1	Bearing 6210-2Z EWH-30
	500449	1	Bearing 6212-2RS1 EWH-40
	500534	1	Bearing 6312-22 EWH-60
10	500799	1	Bearing 55/110/21 EWH-25
	500449	1	Bearing 6212-2RS1 EWH-30
	500545	1	Bearing 6214-2RS1 EWH-40
	500535	1	Bearing 6216-2RS1 EWH-60
11	500385	1	Locking Ring EWH-25
	500456	1	Locking Ring EWH-30
	500589	1	Locking Ring EWH-40
	500536	1	Locking Ring EWH-60
12	500386	1	M12 x 55 Bolt EWH-25
	500551	1	M14 x 50 Bolt EWH-30
	500647	1	M14 x 70 Bolt EWH-40 and 60
13	501508	1	M14 Hex Nut
14	501026	1	Temperature Probe
15	500389	1	Counterseal EWH-25
	500552	1	Counterseal EWH-30
	500592	1	Flat Counterseal EWH-40
	500540	1	Flat Counterseal EWH-60
16	501023	3	Element EWH-25
	501024	3	Element EWH-30
	501025	3	Element EWH-40
	500493	3	Element EWH-60
17	500391	–	Counterseal Bushing Screw
18	500392	1	O-Ring 102 x 3 EWH-25
	500405	1	O-Ring 114 x 3 EWH-30
	500586	1	O-Ring 128 x 3 EWH-40
	500541	1	O-Ring 150 x 3 EWH-60
19	500393	1	Tub Pipe Gasket EWH-25 and EWH-30
	500648	1	Tub Pipe Gasket EWH-40
	500542	1	Tub Pipe Gasket EWH-60
20	500986	1	Safety Thermostat 115°
21	500398	1	Steam Jet EWH-25, 30, and 40
	500494	1	Steam Jet EWH-60
22	500397	1	Complete Closure
23	500399	1	Steam Washer
24	500555	1	Steam Hose EWH-25, 30, and 40
	500523	1	Steam Hose EWH-60
25	500554	1	L-Bend EWH-25, 30, and 40
	500527	1	L-Bend M-H 3/4" EWH-60
26	500403	1	Steam Valve Support EWH-25, 30, and 40
	500526	1	Steam Valve Support EWH-60
27	500402	1	Steam Valve 1/2 50/60 Hz EWH-25, 30, and 40
	500230	1	Steam Valve 3/4 60 Hz EWH-60
28	500401	1	1/2 Double Connection EWH-25, 30, and 40
	500264	1	3/4 Connection EWH-60
29	500404	1	1-2 Connection
30	500400	1	Steam Hose EWH-25, 30, and 40
	500544	1	Steam Hose EWH-60
31	500201	–	Complete Closure Cap

Frame and Suspension System



<u>Illus. No.</u>	<u>Part No.</u>	<u>Qty.</u>	<u>Description</u>
1	500141	4	Washer Leg
2	500478	8	Spring Base
3	500418	—	Damper Bushing
4	500419	4	Spring EWH-25
	500420	4	Spring EWH-30
	500580	4	Spring EWH-60
	500480	4	Spring EWH-60
5	500084	—	120n Shock for EWH-25, 40, and 60
	500085	8	140N Shock for EWH-30
6	500422	1	Cradle EWH-25
	500423	1	Cradle EWH-30
	500482	1	Cradle EWH-40
	500483	1	Cradle EWH-60
7	500424	4	Counterweight EWH-25
	500425	4	Counterweight EWH-30
	500484	2	Counterweight EWH-40
	500485	2	Counterweight EWH-60
8	500486	2	Back Counterweight EWH-40
	500487	2	Back Counterweight EWH-60
9	500428	4	Clamp Fastening

<u>Part No.</u>	<u>Qty.</u>	<u>Description</u>
500088	1	Bearing Kit EWH-25
500089	1	Bearing Kit EWH-30
500090	1	Bearing Kit EWH-40
500091	1	Bearing Kit EWH-60
500934	1	Bearing Housing Complete EWH-25
500935	1	Bearing Housing Complete EWH-30
500936	1	Bearing Housing Complete EWH-40
500937	1	Bearing Housing Complete EWH-60

